

Anatomy of the Vagina and Related Parts

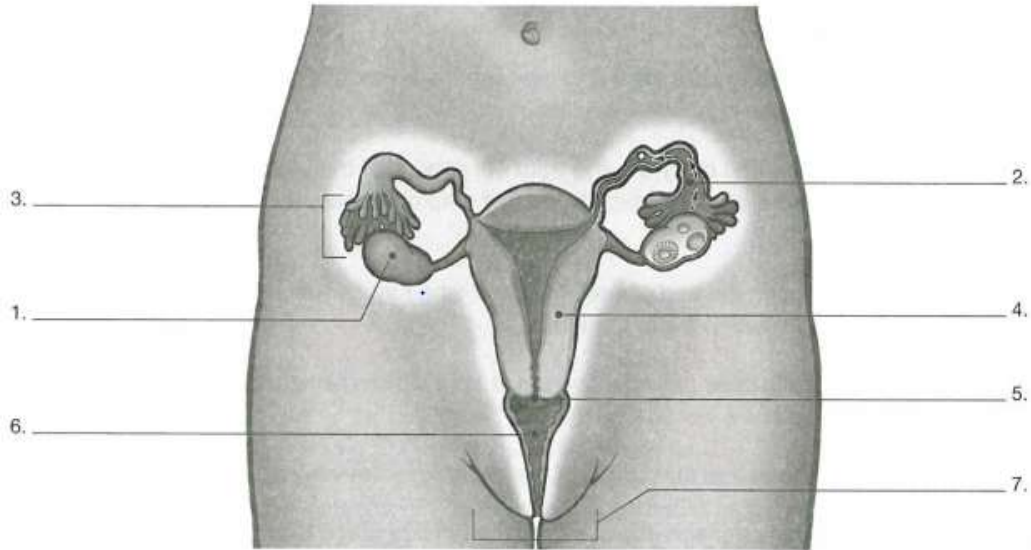
1. Label the following diagram internal view of a body with a vagina using this word bank

Vulva
Uterus

Fallopian Tubes
Vagina

Fimbria
Cervix

Ovaries



2. Label the following internal view (from the side) of a body with a vagina using this word bank

Vulva
Cervix

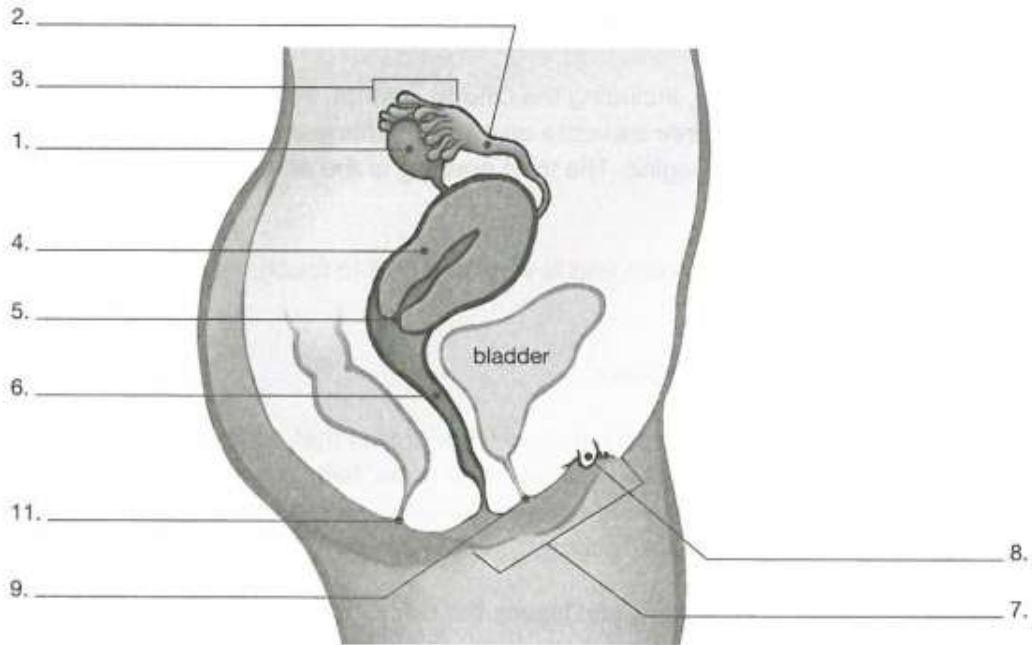
Fallopian Tubes
Urethra

Fimbria
Clitoris

Ovaries
Anus

Uterus

Vagina



3. Label the following external view of a body with a vagina using this Word bank
NOTE: These are not the actual colors, they are just used to help label

Mons Pubis
Anus

Urethra
Clitoris

Labia Majora
Vaginal Opening

Labia Minora



4. ___ (T/F) Intersex bodies are common.
5. ___ per 100 people born in the US are born intersex.
6. **The journey of the egg:** Put the following in order from where an egg first starts in the body to where it exits if it is not fertilized

___ Vagina
___ Fallopian Tubes
___ Cervix
___ Uterus
___ Ovary
___ Fimbria

7. Draw arrows to sort the following body parts into the correct category

Bodies with a Penis

Urethra

Testes

Anus

Labia

Vas Deferens

Seminal Vesicles

Prostate

Most Bodies

Fallopian Tubes

Cervix

Uterus

Fimbria

Ovary

Clitoris

Bodies with a Vagina