

Planned Parenthood of Wisconsin (PPWI) is a 501(c)(3) nonprofit health care provider caring for more than 60,000 patients annually at 24 health centers, providing life-saving breast and cervical cancer screenings, birth control, HIV testing, STD testing and treatment, and safe, compassionate abortion care.

PPWI's mission is to empower all individuals to manage their sexual and reproductive health through patient services, education, and advocacy.



COMBINED STATEMENT OF FINANCIAL POSITION

FISCAL YEAR OCTOBER 1, 2018 - SEPTEMBER 30, 2019

ASSETS

Current Assets	\$10,857,900
Investments	1,265,745
Property & Equipment, Net	10,036,057
Other Assets	2,042,147
Total Assets	\$24,201,849

LIABILITIES & NET ASSETS

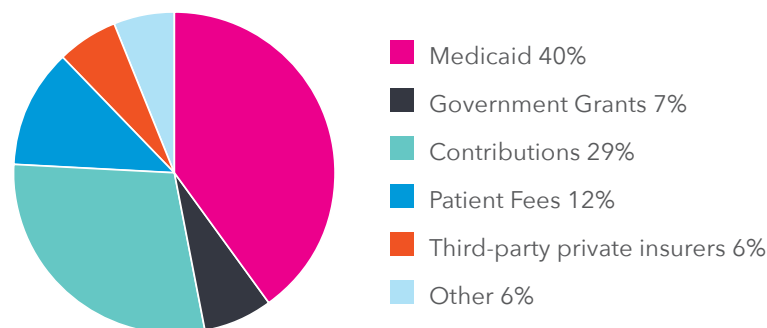
Current Liabilities	\$2,267,422
Long-term Liabilities	—
Total Liabilities	\$2,267,422

NET ASSETS

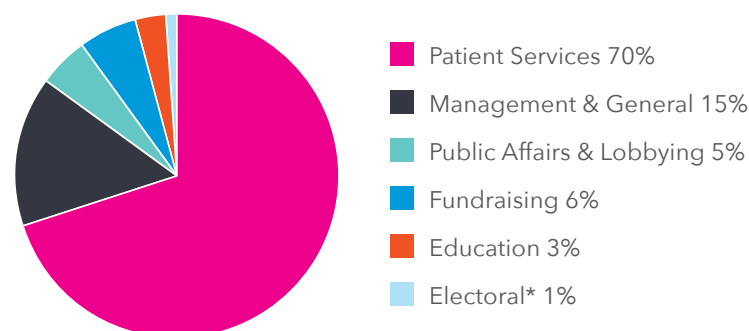
Without Donor Restrictions	\$16,084,104
With Donor Restrictions	5,850,323
Total Net Assets	\$21,934,427

Total Liabilities & Net Assets **\$24,201,849**

SOURCE OF REVENUE



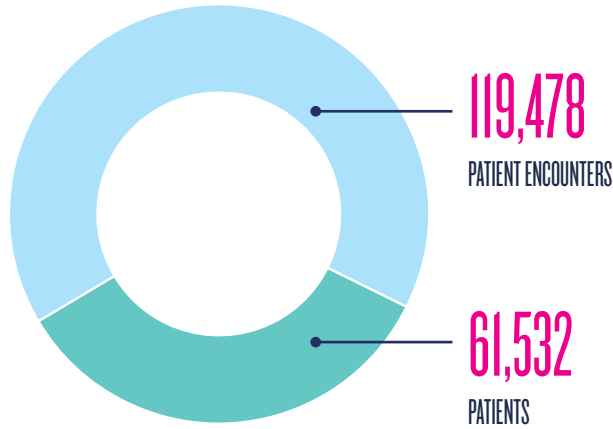
ALLOCATION OF EXPENSES



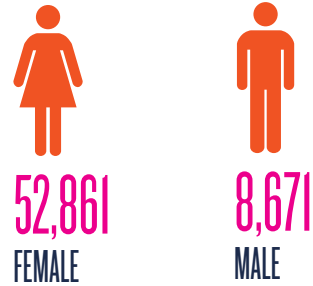
*Planned Parenthood of Wisconsin, Inc. is a tax exempt § 501(c)(3) organization (PPWI) that does not engage in any electoral activities. Planned Parenthood Advocates of Wisconsin, Inc., a tax exempt § 501(c)(4) organization (Advocates), engages in some electoral work as permitted political activity under the Internal Revenue Code. As a combined financial statement, the revenues and expenses of both PPWI and Advocates are included in this summary. However, the electoral activities were strictly Advocates' activities, without any support or involvement of PPWI.

WHO WE SERVED

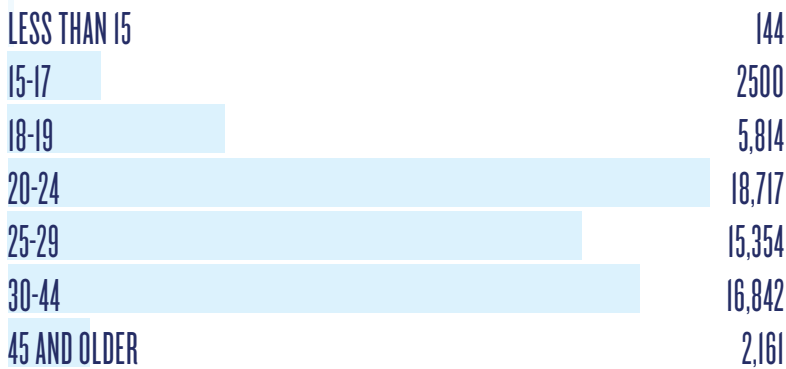
OVERVIEW



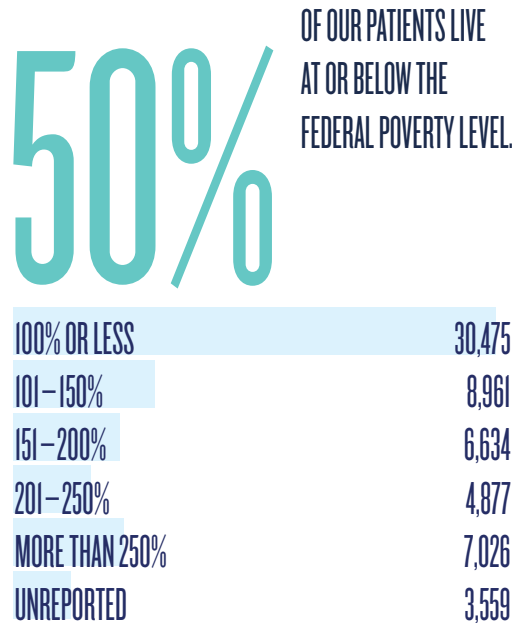
GENDER



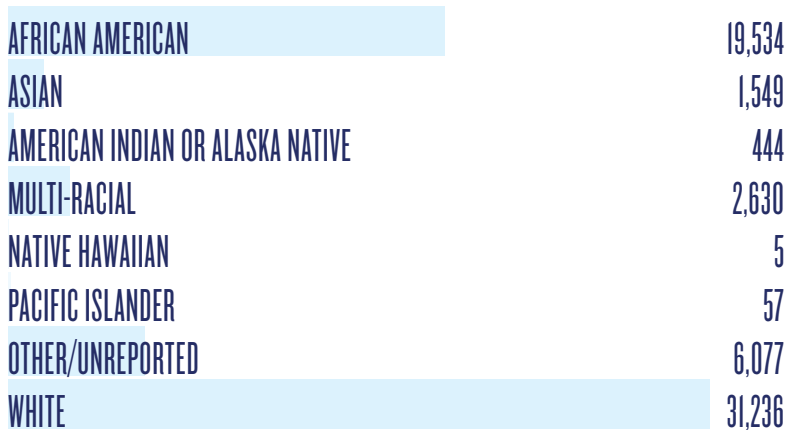
AGE



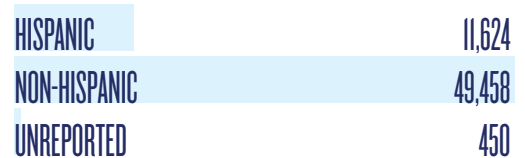
POVERTY LEVEL



RACE



ETHNICITY



SERVICES PROVIDED



BIRTH CONTROL UNITS¹

138,308

EMERGENCY CONTRACEPTION UNITS²

64,188

STD TESTS

114,978

PREGNANCY TESTS

13,248

HIV TESTS

15,395

BREAST EXAMS

891

ABORTIONS

4,886

CERVICAL CANCER SCREENINGS

5,700

COLPOSCOPIES/CRYOTHERAPIES

327

¹ A unit represents the distribution of a single unit of a particular method of Birth Control to a patient, i.e. one IUD, One Pack of pills, etc.

² A unit represents the distribution of a single unit of Emergency Contraception to a patient.

PUBLIC AFFAIRS*

SUPPORTERS

388,446

EMAIL ACTIVISTS

68,078

EMAILS SENT

995,171

VOLUNTEERS

486

VOLUNTEER HOURS

1,458

VISIBILITY AND
OUTREACH EVENTS

75

MEDIA STORIES

384

*Non-electoral activities only

embody : BY THE NUMBERS

Embody is the trademark name of PPWI's education and training programs. Embody is a provider of excellence in comprehensive sex education, training, resources, and information for diverse audiences in Wisconsin and beyond.

954 EDUCATION AND TRAINING OPPORTUNITIES

FOR **20,749** PARTICIPANTS (9,064 UNDUPLICATED PARTICIPANTS)

Including:

92 Number of **educational workshops** in schools and community settings

460 Number of **Home Health Parties**

31 Number of **health fairs and other outreach events**

76 Number of **professional training opportunities**

286 Number of **patients who received peer education through our Youth Health Clinic**

PARTICIPANT DEMOGRAPHICS

AGE

UNDER AGE 12	<1%
AGES 12-14	11%
AGES 15-17	42%
AGES 18-24	6%
AGES 25-60	26%
OVER AGE 61	<1%
UNREPORTED	14%

RACE/ETHNICITY

BLACK	26%
WHITE	27%
LATINX	29%
NATIVE AMERICAN	<1%
ASIAN	<1%
MULTIRACIAL	<1%
UNREPORTED	8%

GENDER

