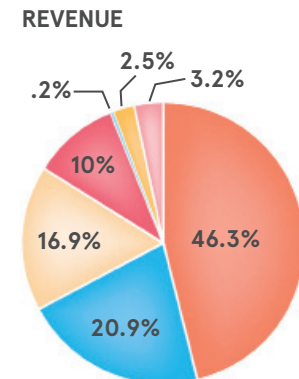


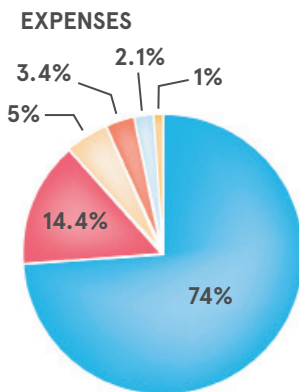
# FINANCIALS

PLANNED PARENTHOOD IS RESPONSIBLE, ACCOUNTABLE, SMART

REVENUE	FY 2014	FY 2013
Third Party Insurers	14,970,394	13,607,708
Contributions	6,755,269	8,733,259
Government Grants	5,444,224	5,805,266
Private Patient Fees	3,218,496	3,550,742
Education	58,795	61,580
Other	821,693	1,303,370
Endowment Investments	1,035,561	591,203
Net Gain		
<b>Total</b>	<b>\$ 32,304,432</b>	<b>\$33,653,128</b>



EXPENSES	FY 2014	FY 2013
Medical Services	21,807,084	20,877,899
Administration	4,252,877	3,814,950
Fundraising	1,484,754	1,446,724
Education	1,011,228	1,006,037
Public Affairs	623,196	887,586
PPFA Dues	299,948	291,808
<b>Total</b>	<b>\$ 29,479,087</b>	<b>\$ 28,325,004</b>



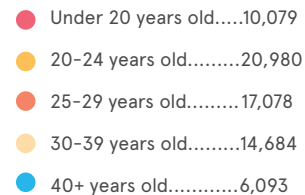
<b>FY14 Net Surplus \$2,825,345</b>	
<b>FY14 Operating Surplus \$130,379<sup>1</sup></b>	
<b>ASSETS</b>	
Long Term	14,748,748
Current	19,061,814
Liabilities	2,721,255
<b>Total Net Assets</b>	<b>\$31,089,307</b>
	<b>\$28,263,962</b>

1. Operating surplus excludes bequests and campaign gifts not available for operations.

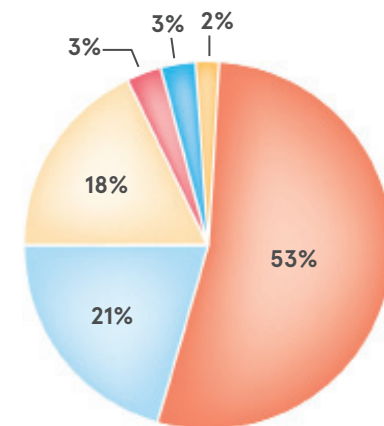
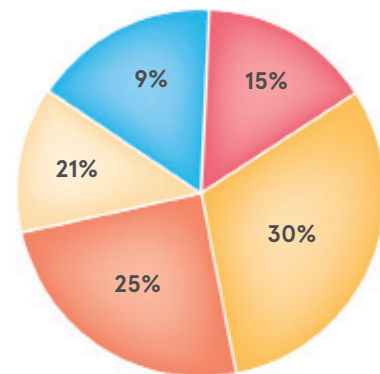
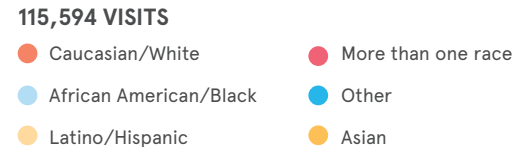
## PLANNED PARENTHOOD IS OUR PATIENTS

Planned Parenthood of Southern New England has made strides towards our goal of decreasing racial and ethnic health disparities in the Connecticut and Rhode Island communities. From education and training to community door-knocking, PPSNE has increased its reach to more diverse communities. The result is a more diverse patient base. Women, men and teens come to Planned Parenthood because they know we provide affordable, confidential health care. They leave PPSNE knowing that they received quality, non-judgmental health care. For 90 years, PPSNE has been and continues to be committed to serving all patients who walk through our health center doors.

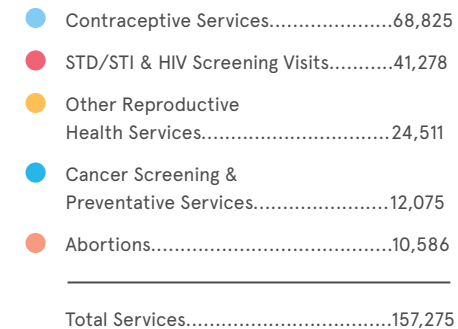
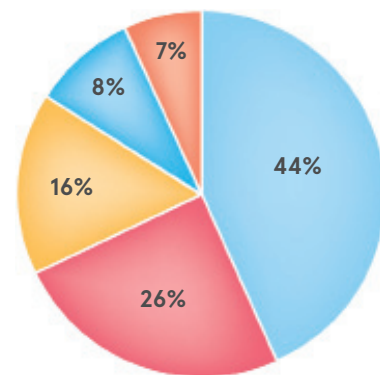
### AGE OF PATIENTS



### 68,914 PATIENTS



## PLANNED PARENTHOOD IS OUR MEDICAL SERVICES



## PLANNED PARENTHOOD OF SOUTHERN NEW ENGLAND

### OFFICERS, 2013-2014

Amelia Renkert-Thomas, JD, *Chair*  
 Simone P. Joyaux, *Vice Chair*  
 Sandra Arnold, *Secretary*<sup>^</sup>  
 Siw de Gysser, *Treasurer*  
 Leigh Bonney, *Assistant Treasurer*

### SENIOR MANAGEMENT

Judy Tabar, *President & CEO*  
 Mary Bawza, *Chief Operating Officer*  
 Christopher Bellis, *Vice President of Development*  
 Jenny Carrillo, PhD Δ, *Senior Vice President of External Affairs & Strategic Planning*  
 Linda Cote, *Chief Financial Officer*  
 John Jessop, *Vice President of Information Technology*  
 Pierrette C. Silverman, *Vice President of Education & Training*  
 Tyler Thorpe, *Vice President of People Development & Support*  
 Erika Ulanecki, *Director of the Office of the President*  
 Marjorie Wren, *Senior Director of Campaign & Major Gifts*  
 Susan Lloyd Yolen, *Vice President of Public Policy & Advocacy*

In June 2014, we welcomed Laurie Scott, Vice President of Development.

### BOARD OF DIRECTORS, 2013-2014

Natalie Adsuar, MD  
 Adriana Arreola-Joseph  
 Erica Buchsbaum  
 Gayle Capozzalo  
 Karen Dubois-Walton, PhD  
 Sue Hessel<sup>^</sup>  
 Susann G. Mark  
 Nadesha Mijoba<sup>^</sup>  
 Donna Moffly  
 John R. Morton, MD  
 Susan Ross  
 Fahd Vahidy  
 Mary Kay Woods<sup>Δ</sup>

<sup>^</sup> Retired from Office or Board of Directors in May 2014.

### In May 2014, we welcomed new members to the PPSNE Board of Directors:

Bridget Baird, Chris Corcoran, Holland Dunn and Frances Padilla.

### PRESIDENT'S COUNCIL

Leslie S. Bhutani	Deborah J. Freedman Δ	Loulie Mauran	Peggy Sharpe
Cynthia M. Blumenthal	Francine E. Goldstein	Sheila Mossman	Jo Sly
Elizabeth Chace	Vivien Hassenfeld	Cynthia Paterson	Sandra G. Wagenfeld Δ
Karen Dahle	Sue Hessel	Sarah Richardson	Joan Warburg
Phoebe L. Erdman Δ	Marie-France Kern	Marcia Riesman	Don E. Wineberg Δ
Rosalie Fain	Chester Kitchings	Linda H. Roth Δ	
Betsy Fink	Ellen B. Lubell ◇	Nancie K. Schwarzman	

+ Deceased ◇ Board member Δ Former Board member # Staff member 20 year donor at the \$1,000+ level

### OUR MISSION

The mission of Planned Parenthood of Southern New England is to protect the fundamental right of all individuals to manage their own fertility and sexual health and to ensure access to the services, education and information to realize that right.

345 Whitney Avenue  
 New Haven, CT 06511  
 203.865.5158

111 Point Street  
 Providence, RI 02903  
 401.421.782

PresidentsCircle@ppsne.org ppsne.org  
 Text MYPPGIFT to 41444, follow link to make an online donation.

### OUR VISION

Together we will create a healthier generation and a more just society by putting sexuality education and sexual health care in the hands of young people—giving them the information and power they deserve to shape their future.

### OUR CORE VALUES

- Integrity
- Partnership
- Quality
- Customer Service
- Communication



# GETTING TO KNOW PLANNED PARENTHOOD

## 2013 - 2014 ANNUAL REPORT



### CONNECT WITH US



Planned Parenthood of Southern New England

GET TO KNOW PLANNED PARENTHOOD  
 WHERE YOUR VOICE GETS STRONGER  
 BY THE NUMBERS



Planned Parenthood of Southern New England

## GETTING TO KNOW PLANNED PARENTHOOD

A MESSAGE FROM OUR PRESIDENT AND OUR BOARD CHAIR

We have accomplished so much together and this update is filled with examples of the incredible work that you have helped make possible over the past year. We hope that you will enjoy a few moments of reflection about the very real ways that your support of Planned Parenthood of Southern New England is making a difference in the lives of women and families across Connecticut and Rhode Island.

As the Affordable Care Act (ACA) was implemented nationwide last fall, we dedicated ourselves to helping individuals secure health insurance. We reached thousands of people through our efforts, educating them not only about the new health care benefits available to them but also about how they could become advocates for their own health and the health of their communities.

We were thrilled to move two of our health centers to beautiful new locations in Manchester and Enfield, CT, last year. One patient shared upon entering the new Manchester Health Center: "WOW! You guys deserve an amazing place like this for all the hard work you do! I love it!" Because of the generous support, we are now able to provide top-quality health care in a beautiful space that is designed specifically to meet the needs of our patients.

We are continuing to engage the next generation of leaders to renew and reshape our movement. In the past year, we significantly expanded our STARS teen peer educator program by adding a group in Bridgeport, CT; and this addition helped grow the number of STARS by 43% from 47 to 67.

On behalf of everyone at PPSNE, thank you for your dedication to this organization, for your continuous generosity, and for your partnership in our vital work.

Judy Tabar  
President and CEO

Amelia Renkert-Thomas  
Board Chair



Judy Tabar (center) stands with Amelia Renkert-Thomas (right) and Sarah Weddington, Attorney for Roe v. Wade Supreme Court Case at the 2014 Annual Spring Luncheon in Stamford, Conn.

## BOLD & NEW

PLANNED PARENTHOOD IS BRAVE, INNOVATIVE

Your support has allowed PPSNE to be fearless and to embark on exciting new ventures that have proven beneficial to our organization and especially to our community.

PPSNE moved two health centers into new locations this fiscal year in Manchester and Enfield, CT. Manchester opened its doors to patients on October 14, 2013, at 319 Main Street; Enfield opened its doors on March 24, 2014, at 111 Hazard Avenue. These new locations offer convenient free parking as well as walk-in and same-day appointments. PPSNE will continue to extend the same high-quality, affordable reproductive health care it provides to all of its patients in these new locations.



Manchester, CT

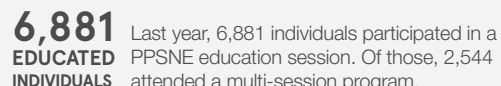


Providence, RI

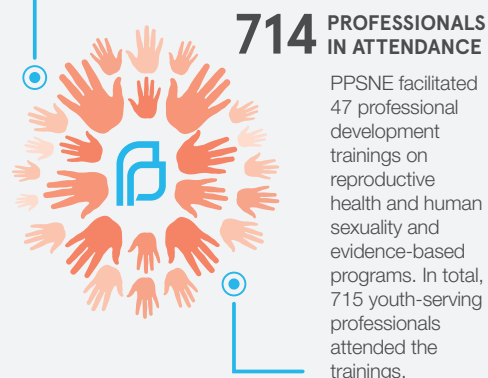
In May 2014, PPSNE launched a new marketing campaign, "Facts," developed in partnership with Planned Parenthood of Minnesota, North Dakota, South Dakota and Tait Subler, a strategic consultancy firm, in order to better differentiate Planned Parenthood as a health care provider. The Facts Campaign highlights the number of times Planned Parenthood provided particular services across the country and then encourages readers to "Get to Know Planned Parenthood; Where Your Voice Gets Stronger by the Numbers." This comprehensive branding campaign includes radio advertising, digital and vinyl billboards, metro bus signage, bus shelter signage, building signage, banners, social media, and online advertising on sites such as Pandora and Google.



As part of the Centers for Disease Control Teen Pregnancy Prevention Initiative in the City of Hartford (HTTPI), PPSNE trained 23 youth-serving professionals through an evidence-based curriculum aimed at reducing the rates of HIV, STIs and teen pregnancies. The professionals received 148 hours of training and technical assistance. They came from the following community-based organizations: Family Life, Maternal Infant Outreach Program, Blue Hills Civic, Hartford Public School (HPS) Nursing Academy, HPS Law & Governance Academy and the HPS Academy of Engineering and Green Technology. Through the curriculum, the trainees reached 382 youth.



Last year, 6,881 individuals participated in a PPSNE education session. Of those, 2,544 attended a multi-session program.



PPSNE facilitated 47 professional development trainings on reproductive health and human sexuality and evidence-based programs. In total, 715 youth-serving professionals attended the trainings.

ppsne.org

## HEALTH CARE

PLANNED PARENTHOOD IS THOUGHTFUL, CARING

Your commitment and dedication to Planned Parenthood of Southern New England has paved the way for us to become one of the region's largest providers of family planning and reproductive health care services. Since 1923, you have helped us grow into an organization with 18 health centers in Connecticut and Rhode Island, delivering care to nearly 70,000 patients each year.

» Since the inception of the Connecticut Medicaid Family Planning Expansion, PPSNE has completed applications for 9,320 patients. Many of these patients got their services covered because they were eligible for full-benefit or Medicaid. This is exciting news for our work to address racial and ethnic health disparities.

» This past winter, we officially launched primary care services at four of our PPSNE centers: New London, Waterbury, Meriden and Providence. Through the end of March and, since that time, we have seen 110 primary care visits at these centers. Visits included work physicals, treatment of upper respiratory infections, seasonal allergies, ear pain, sinus infections, acute bronchitis and sore throats. We continue to explore other services we might add over time.



## FROM OUR DONORS

I believe that good contraceptive services are essential to women's rights, and Planned Parenthood is a very important voice in keeping those services available to all women.

Julia Holcomb  
Leesburg, VA

I have been very impressed by the services provided at Planned Parenthood. I've been there for gynecological services, birth control, and for the pregnancy test that confirmed that I was expecting. My daughter is now 14 and I want to make sure that Planned Parenthood's services are there for her when she needs them.

Stacy Cutler  
Essex, CT

As the mother of three daughters, I am very concerned about women's rights and appreciate the role Planned Parenthood plays in trying to preserve these rights.

Judith Crowley  
Burlington, CT

## LOOKING AHEAD

In June 2015, PPSNE will celebrate the past, acknowledge the present and look to the future when we commemorate the 50th Anniversary of *Griswold v. Connecticut*. In 1965, the leaders of (then) Planned Parenthood League of Connecticut put their lives on the line to provide the community with what was considered "illegal contraception" and were arrested. Although the Connecticut court upheld the conviction, Estelle Griswold, the executive director of Planned Parenthood League of Connecticut, and C. Lee Buxton, doctor and professor at Yale Medical School appealed to the U.S. Supreme Court, which reviewed and decided the case in 1965. This ground-breaking decision set a precedent and contributed to the success of *Roe v. Wade*.

This success will not be forgotten. Remembering how we won that fight empowers PPSNE to continue the fight with hope and high expectations. Fifty years later, women are still fighting for birth control, and it is exciting to see our young people taking on this fight. Stay tuned for events next spring celebrating this critical decision.

## ADVOCACY

PLANNED PARENTHOOD IS BOLD, FEARLESS, DRIVEN

Because of champions like you, our public policy and advocacy team can confidently fight to ensure every individual knows their health care rights and has access to the services, education and information to help them realize those rights.

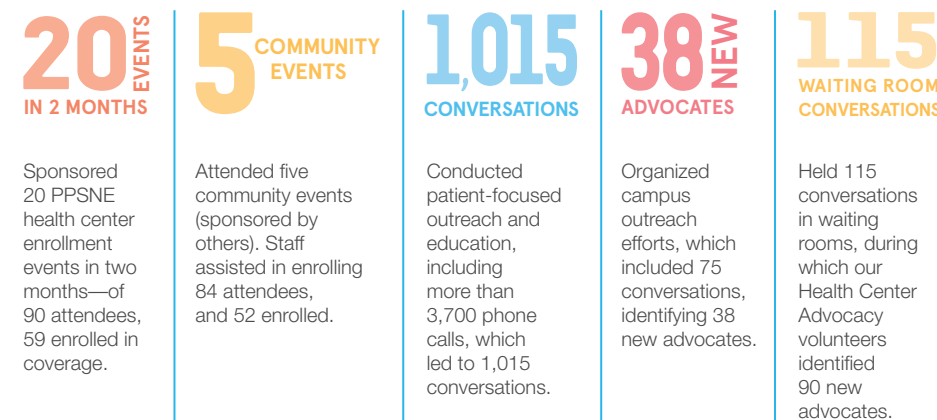
### THE AFFORDABLE CARE ACT

Along with Planned Parenthood, the Affordable Care Act (ACA) had a major impact on the lives of millions of Americans beginning in 2013. PPSNE partnered closely with Access Health CT, Connecticut's state exchange. We kicked-off our education and outreach efforts by educating the public at community events such as town parades, concerts and rallies as well as holding educational events in our health centers and communities.

With significant funding from both Planned Parenthood Federation of America (PPFA) and

the Connecticut Health Foundation, PPSNE hired two ACA Enrollment Specialists who reached out to PPSNE patients by phone, invited them to enrollment events at our health centers, and helped them navigate the complicated web-based application process.

Members of the public policy and advocacy team also became "certified application counselors" and canvassed neighborhoods door-to-door, in order to spread the word about the ACA.



A major focus of our work this year has been to introduce advocacy opportunities for patients in the waiting areas of PPSNE health centers. The Health Center Advocacy Program (HCAP) has engaged 15 volunteers/interns who primarily promote the ACA, collecting nearly 700 supporter signatures during more than 800 conversations in our waiting rooms across both states.

Our RI HCAP project has resulted in the collection of more than 400 "Obamacare Works" cards and 87 "I Stand with Planned Parenthood" cards from our patients. We collected more than 100 personal stories from our patients that often focused on their experiences receiving health services at Planned Parenthood, as well as their access to health insurance, lack of it, and the importance of gaining coverage.

I  
STAND  
WITH  
PLANNED  
PARENTHOOD®

## EDUCATION & TRAINING

PLANNED PARENTHOOD IS FORWARD-THINKING, IMAGINATIVE, OPEN-MINDED

Your generosity allows our education and training team to continue to provide educational opportunities to youth, professionals, parents and community-based organizations. Our comprehensive sex education and training programs reduce racial and ethnic health disparities in Connecticut and Rhode Island while promoting the importance of knowledge about sexual health.

In November, Teen Clinic expanded to our New London Health Center. This brings the number of Teen Clinic locations to four: New London, New Haven, Hartford and Bridgeport. At the monthly Teen Clinic program, teens can receive free preventive care and sexuality education in a teens-only environment. Overall, there were 110 health center visits. Our teen peer educators (STARS) planned and coordinated the program in partnership with health center staff.

TEENS ONLY

