



We're Proud to Stand With Planned Parenthood

Planned Parenthood is no stranger to condemnations and mischaracterizations; yet this past fiscal year we saw an unprecedented number of attacks from across the country. Nationally, the House of Representatives voted to cut off all funding to Planned Parenthood. This was followed by the Susan G. Komen Foundation's initial decision to cease its longstanding partnership with Planned Parenthood; cutting funding used to provide breast examinations, education, and access to services for low income women and underserved communities across the country. Finally, the U.S. Senate narrowly defeated the Blunt Amendment, which would have allowed employers to refuse to cover health services to employees by citing "moral reasons." In addition, here in Delaware, Planned Parenthood fought off two anti-choice bills in the General Assembly.

Despite these challenges, we consistently have provided high-quality reproductive health care and education to the thousands of Delawareans who rely on us. We rallied in Washington D.C. in April with thirty five local supporters, and thousands of other Planned Parenthood advocates from around the country to protest threats to Planned Parenthood in the federal budget. Locally, our educators continued to provide evidence-based prevention programs through the PREP (Personal Responsibility Education Program) grant, with the goal of reducing risky sexual behavior and teen pregnancy, and increasing knowledge about STDs and HIV.

We continue to feel the economic turbulence. During the summer of 2011, Planned Parenthood of Delaware launched the Stand Up Campaign to help close the gap in our deficit. With support from 164 donors, including a generous gift from the Arronson Foundation, we were able to reach 91% of our goal. We held informal gatherings at Cokesbury Village and Methodist Country House to update our donors on our services and the current issues facing Planned Parenthood of Delaware. In October, to celebrate our 80th Anniversary, Planned Parenthood Federation of America President Cecile Richards spoke to our board and donors at a cocktail party, which was graciously hosted by a former Board Chair. Our Seventh Annual Chocolate Festival took place at Hagley Museum in late October, and was attended by 270 supporters and chocolate lovers.

We began preparations for the installation of an electronic health records system in January 2012. Implementing electronic health records will improve the quality of care for our patients through the reduction of paperwork and administrative costs. The overall goal is to ensure that we continue to provide high-quality patient care.

While we both are leaving our roles with the agency, we know that the work we have done here will continue. We are both enormously proud of this organization, its mission, and its staff. We look forward to seeing the next phase of growth, change and opportunity at Planned Parenthood of Delaware.

Steven R. Director
Board Chair

Nanci Hoffman
President & CEO

Supporting Planned Parenthood of Delaware



Our funders are essential partners in Planned Parenthood's mission – generous foundations and individuals who also believe in a place where healthy women can go to be educated and supported while forming a plan. Planned Parenthood of Delaware offers donors the following creative options for helping to support our mission. To use our convenient and secure website to make a gift, log on to www.ppdel.org and select Donate or call 302-655-7296 extension 1033, to speak to someone on our donor services team.

Annual Gifts

You can make an unrestricted gift or gifts for a specific purpose to Planned Parenthood of Delaware Inc. or Planned Parenthood Advocacy Fund of Delaware. Gifts to Planned Parenthood of Delaware are tax-deductible. Gifts to the Advocacy Fund are not tax-deductible. Major donors can contact the VP of Development at 302-655-7296 extension 1033, or email ahughes@ppde.org.

Bequests and Planned Gifts

Bequests and life income gifts help ensure reproductive freedom for future generations. Charitable gift annuities, pooled income fund gifts and charitable trusts can also provide lifetime payments to you. Please call our Development department at 302-655-7296 extension 1033.

Monthly Giving

Strengthen Planned Parenthood of Delaware through a sustaining monthly gift transferred directly from your bank account or credit card. Please call our Development department at 302-655-7296 ext. 1027 or email cknowles@ppde.org for more information.

Gifts of Stock

Receive a charitable deduction for the full, fair market value of your gift to PPDE, along with an exemption from capital gains tax on shares you have owned for at least one year – subject to legal limits. Please call our Development department at 302-655-7296 extension 1033 or email ahughes@ppde.org.

Workplace Giving

Help sustain Planned Parenthood of Delaware through United Way and other workplace matching gift programs. Under our matching gifts program, your employer may double or even triple the value of your gift. Your company's human resources office can provide appropriate information or contact our Development Department at 302-655-7296 extension 1033.



Public Affairs

Our supporters – donors, volunteers, interns, and dedicated staff – continued to advocate for women’s health and reproductive rights over the past year. We took a bus trip to Washington D.C. in order to meet with Senator Coons and Representative Carney about threats to Planned Parenthood in the federal budget. Even in the Delaware General Assembly, we fought off two anti-choice bills. The first was a fatally-flawed bill which would have targeted new regulations solely at abortion providers. Far from improving the safety of our clients, the bill would have required the state to enforce onerous regulations intended to deter doctors from providing safe and legal health care. The second bill attempted to make it more difficult for young people to access abortion in Delaware, despite evidence that legislation of this nature actually harms the health of young women. Both pieces of legislation were defeated in committee. Two good bills which will positively impact the safety and quality of all medical providers in Delaware were passed and signed into law.

In addition to working with legislators, Planned Parenthood actively engaged with other policy-makers in plans for the implementation of the Affordable Care Act. The Public Affairs staff was also involved with various committees, coalitions, and community councils in their work to improve the health outcomes of all Delawareans. Planned Parenthood volunteers and members of our groups for young people worked together on 47 community outreach events that provided preventive health information to about 52,000 people across the state.

Young people are an increasingly integral part of the work that we are doing, particularly in advocacy. Young Advocates for Planned Parenthood hosted two fundraisers during the year. VOX, Voices for Planned Parenthood, held a fun event on campus in Fall 2011; they also did extensive outreach in the Spring term. VOXers even requested a workshop from our Education and Training department so that they can provide sex ed to their peers on campus. In a year of unprecedented challenges, the strength of support from our community allowed Planned Parenthood’s advocacy work to flourish.

Sexuality Education Training Institute

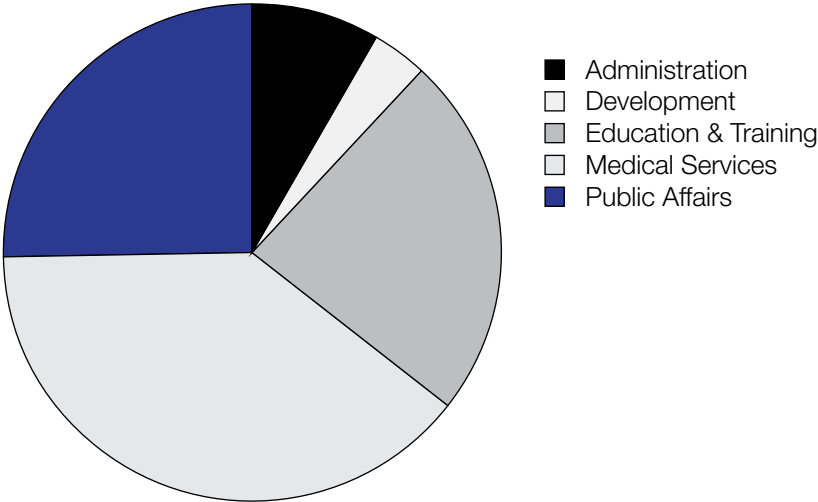
The Sexuality Education Training Institute (SETI) had a banner year! Thanks to the launch of the PREP (Personal Responsibility Education Program) grant and other education contracts, the department became essentially self-sufficient, and added two new staff-members, Educator/Trainer Kate Randall, MEd and Education & Training Assistant Bryce Komaroff. We also provided needed education and professional training to targeted locations around the state. See below for a list of outputs. Under the PREP grant first year we achieved over 550 youth completing a 6-8 hour evidence-based HIV/STD/teen pregnancy prevention program in their schools or community-based organizations. In addition to reaching thousands of Delawareans in need, VP of Education & Training Catherine Dukes, PhD and Education & Training Manager Rebecca Roberts, MEd also spoke on “The Sexting Craze: Can we protect youth from sex & tech?” at the National Sex Ed Conference in December 2011.

	Workshops	People Served
Community & Youth Education	226	2420
Individual & Family Consultations	7	13
Professional Development	37	724
Total	270	3157



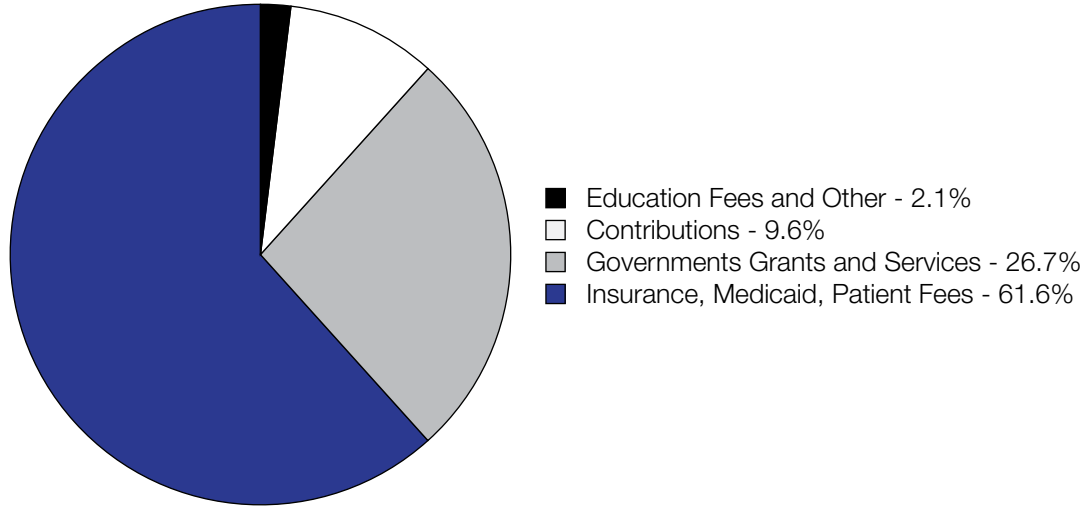
Our Volunteers

FY2012	
Administration	382.75
Development	163.5
Education & Training	1082.5
Medical Services	1775.05
Public Affairs	1144.95
Total Hours	4548.75

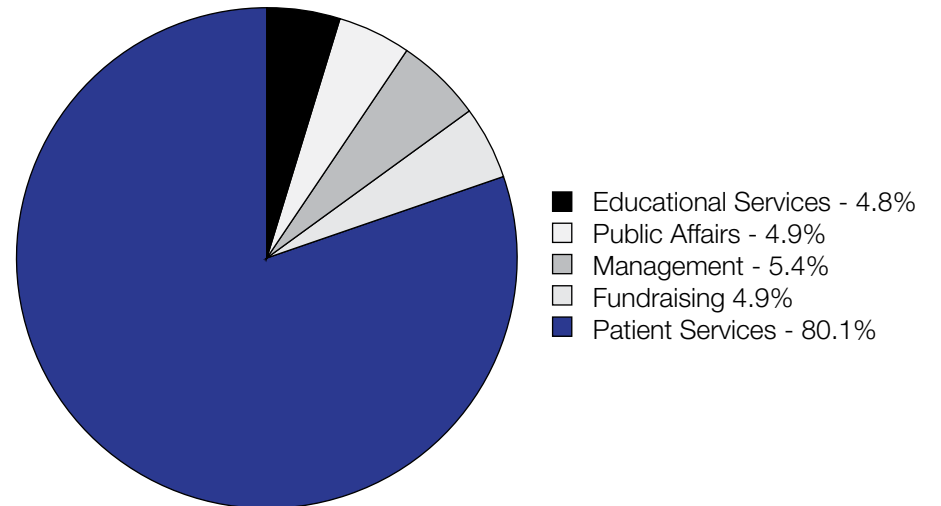


2011

Revenues and Support	FYE 2011	
Contributions	341,039.00	9.6%
Government grants and services	951,577.00	26.7%
Insurance, Medicaid, Patient Fees	2,190,566.00	61.6%
Educational and Other	74,579.00	2.1%
Total revenues	3,557,761.00	100.0%

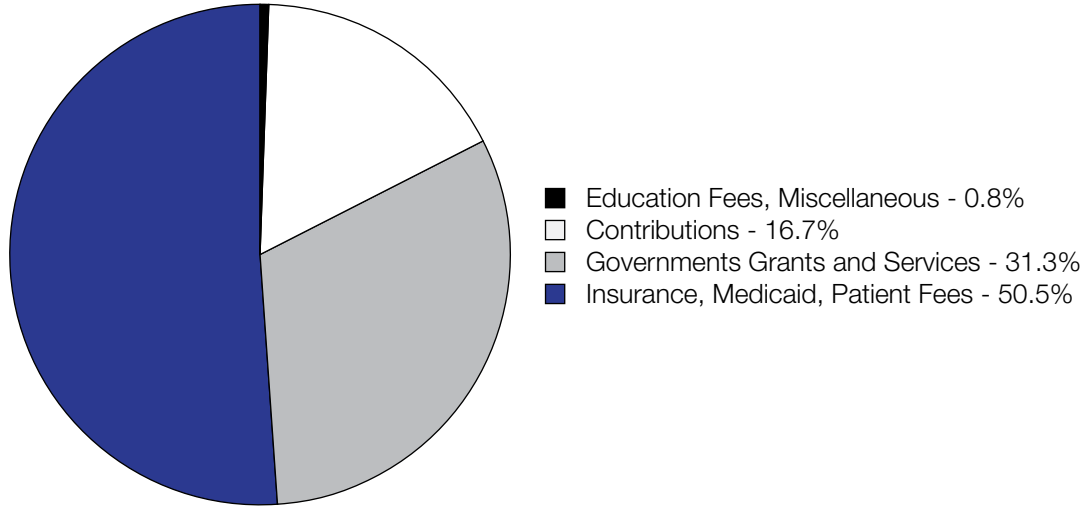


Expenses	FYE 2011	
Patient Services	3,522,199.00	80.1%
Educational Services	210,361.00	4.8%
Public Affairs	214,176.00	4.9%
Management	236,882.00	5.4%
Fundraising	214,484.00	4.9%
Total expenses	4,398,102.00	100.0%

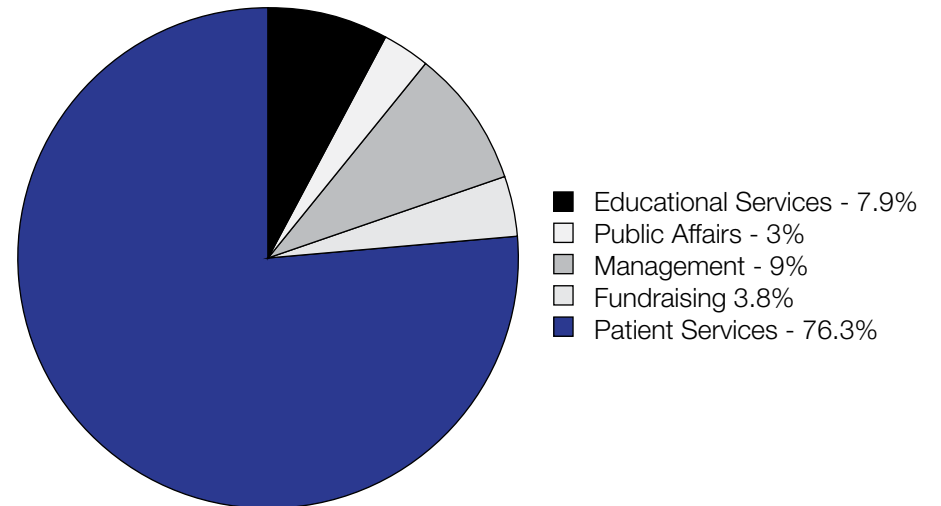


2012

Revenues and Support	FYE 2012	
Contributions	764,443.00	16.7%
Government grants and services	1,427,809.00	31.3%
Insurance, Medicaid, Patient Fees	2,306,845.00	50.5%
Educational fees, Miscellaneous	68,049.00	1.5%
Total revenues	4,567,146.00	100.0%



Expenses	FYE 2012	
Patient Services	3,665,503.00	76.3%
Educational Services	379,186.00	7.9%
Public Affairs	145,108.00	3.0%
Management	430,699.00	9.0%
Fundraising	184,917.00	3.8%
Total expenses	4,805,413.00	100.0%



Our Services

	FYE 2012*	% of totals	FYE 2011*	% of totals
Family Planning Supplies, Procedures				
Condoms	12,000	43%	12,500	43%
Depo Shot	1,700	6%	1,600	5%
Evra Patch	325	1%	400	1%
IUC	200	1%	250	1%
Nuvaring	1,400	5%	1,500	5%
Pills	4,650	17%	5,700	19%
Plan B / Emergency Contraception	1,050	4%	1,525	5%
Pregnancy Tests	2,500	9%	2,725	9%
Ultrasounds	3,800	14%	3,100	11%
	27,625	100%	29,300	100%
Cancer Screening Exams				
Pap Smears	1,425	34%	1,400	31%
Breast Exams	2,575	61%	2,950	65%
Gardasil	250	6%	200	4%
	4,250	100%	4,550	100%
Sexually Transmitted Disease Testing				
STD Tests	18,600	96%	18,150	95%
HIV Tests	800	4%	900	5%
	19,400	100%	19,050	100%
Abortion Procedures				
Abortion Pill	1,350	40%	1,100	42%
In Clinic Procedure	2,000	60%	1,500	58%
	3,350	100%	2,600	100%
Summary				
	2012		2011	
Abortions	3,350	6%	2,600	5%
Cancer Detection/Prevention	4,250	8%	4,550	8%
Disease testing	19,400	36%	19,050	34%
Family Planning Supplies, Procedures	27,625	51%	29,300	53%
	54,625	100%	55,500	100%

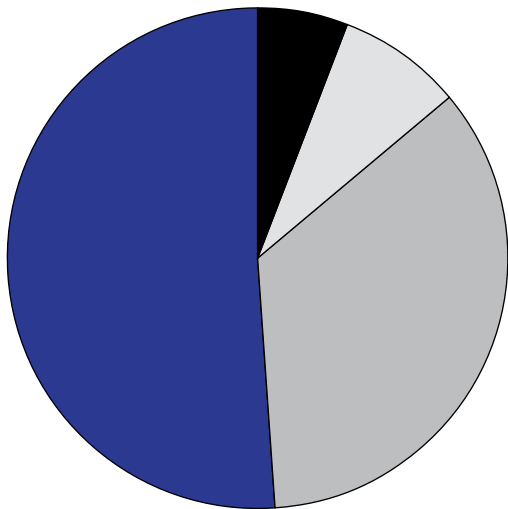
*rounded



Our Services

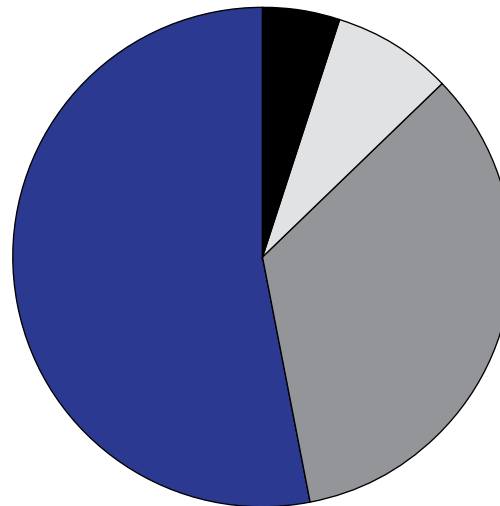
2012

- Abortions - 6%
- Cancer Detection/Prevention - 8%
- Disease Testing - 35%
- Family Planning Supplies, Procedures - 51%



2011

- Abortions - 5%
- Cancer Detection/Prevention - 8%
- Disease Testing - 34%
- Family Planning Supplies, Procedures - 53%



Our Offices

Administration

625 N. Shipley Street
Wilmington, DE 19801
Phone (302)655-7296
Fax (302)655-1907

Medical Centers

Wilmington

625 N. Shipley Street
(302)655-7293

Newark

140 East Delaware Avenue
(302)731-7801

Dover

805 S. Governors Avenue
(302)678-5200

Officers

Steven R. Director
Board Chair
Susan A. Herrmann
Vice Chair
David B. Brown
Vice Chair
Terri L. Tipping
Treasurer
Charles J. Durante
Secretary

Board of Directors

Mary Jo Anderson
Kyle Bottorff
Barbara Cooch
Susan Del Pesco
Robert DeMajistre
Richard L. Easton
Kathleen Epler
Ruth Frangopoulos
Marilyn Hayward
Douglas Herrmann
Dr. Robert L. Hickok, Jr.
Karen Hudson
Amy H. Hughes
Yardise Jones
Nicole Majeski
Paula Paul
M.Q. Riding
Jocelyn Scott
Renee Simonton
Julie Wilgen

President and CEO

Nanci Hoffman

